



Fire Pumps in Complying with NFPA 20 Standard

✓ ETN YN Series





Experience

With our R&D, production and implementation experience of more than 35 years in the pump technologies field, we protect you and your investments without compromising from quality with our expert sales and after sales services.

We offer complete solutions for building pump systems with our wide product range including in-line dry rotor circulating pumps, horizontal single stage end suction pumps, vertical multi stage centrifugal pumps, horizontal split case pumps, waste water and drainage pumps, waste water lifting units, booster systems for residential and commercial buildings, residential fire fighting booster systems, mobile fire extinguishing and flood discharging pumps and fire pumps complying with EN 12845 and NFPA 20 standard under the brand of ETNA. At the same time our company is "FM listed company" for our end suction pumps. If you request, we would be pleased to service you for fire fighting sets with 500/750/1000 gpm flow and 112-195 psi pressure with FM certificate.

Eco-Friendly Engineering

By combining advanced pump features with innovative technologies, we offer high quality, high performance, energy efficient, eco-friendly and low cost products to the end users. With the vision of providing latest technology pump systems, ETNA is preferred in prestigious projects in both Turkey and many other countries and is used in confidence.

ETNA Fire Pump Systems



ETNA Fire Pumps in Complying with NFPA 20 Standard

ETNA fire pumps in complying with NFPA 20 standard are designed and manufactured in line with the norm no. 20 of NFPA (National Fire Protection Association) of USA.

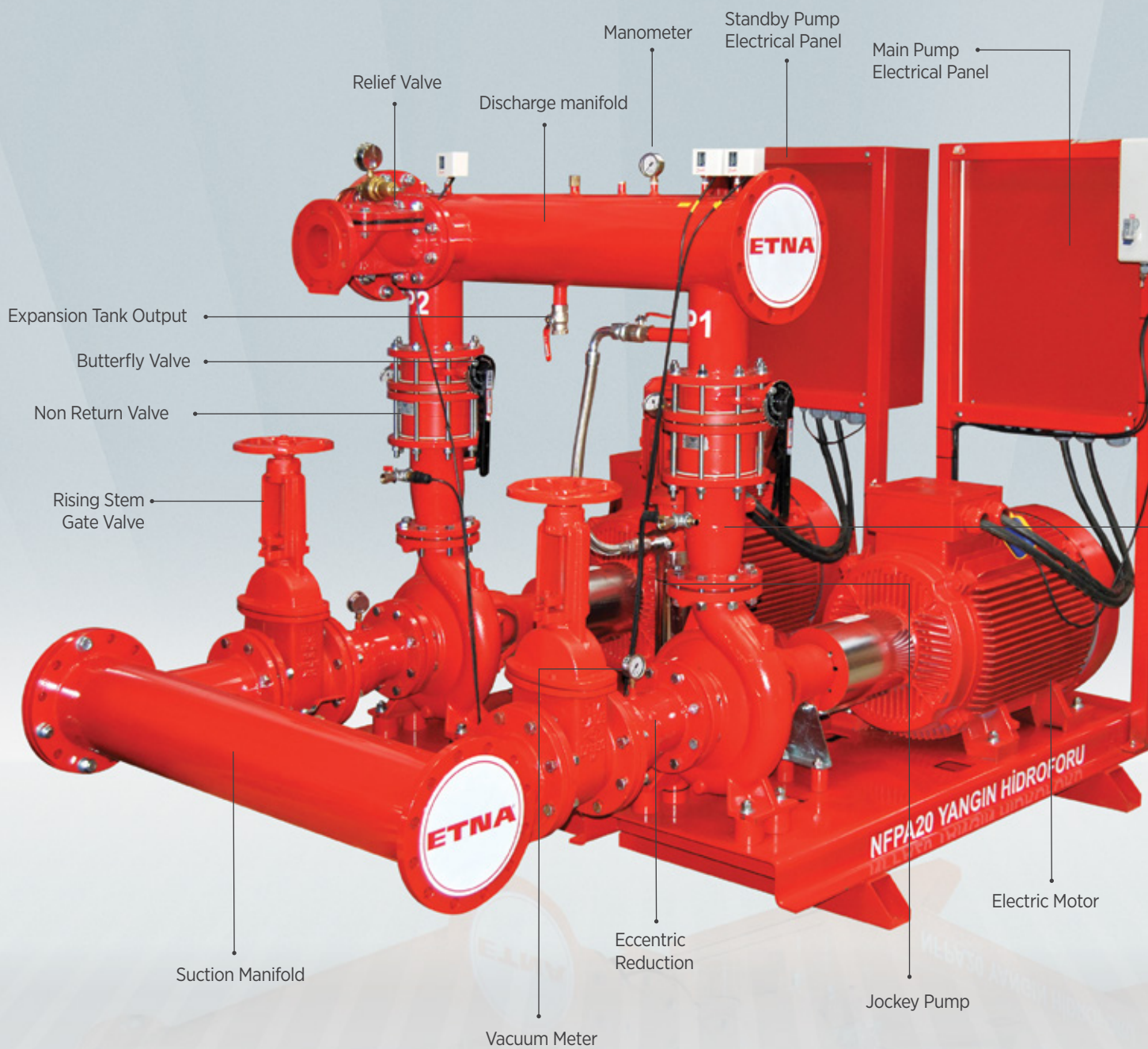
The main specification of the fire pumps are as follows:

- Produced modularly with electric motor or diesel engines.
- EA series end suction pumps are used.
- Hydraulic efficiency does not fall below 65% of the nominal pressure at 150% capacity.
- Pump's closed valve at value (zero flow) does not exceed 140% of the nominal pressure.
- At suction manifolds water speed does not exceed 3m/s.
- Pump body is GG25 cast iron , pump impeller is bronze and sealing is mechanical seal or gland packing.

Exact Answer to Your Needs

Our expert engineering team assists you in identifying the right pump set for your project. Our selecting products are delivered as full sets including an electrical motor and diesel engine, a jockey pump, an electrical/diesel control panel, an individual modular baseplate for each pump.

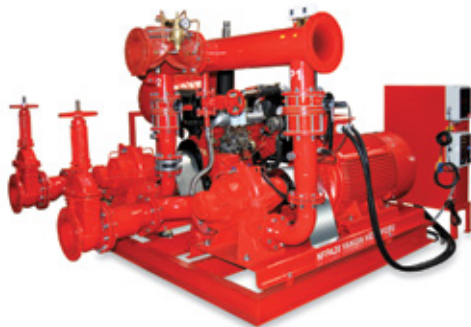
Details of Fire Pumps in Complying with NFPA 20 Standard





Electrically Driven Fire Pump

Number of Main Pumps	: 1 - 3
Number of Jockey Pumps	: 1
Maximum Capacity - Flow Rate	: 3 x 500 m ³ /h
Maximum Pressure	: 120 mwc
Max. Electric Pump Power	: 200 kW
External Control Voltage	: 24 V
Panel Control Class	: IP 54



Electrical / Diesel Fire Pump

Number of Main Electrical Pumps	: 1
Number of Stand-by Engine Pumps	: 1
Number of Jockey Pumps	: 1
Maximum Capacity - Flow Rate	: 2 x 500 m ³ /h
Maximum Pressure	: 120 mwc
Max. Electric Pump Power	: 200 kW
Max. Diesel Pump Power	: 225 kW
External Control Voltage	: 12 - 24 V
Panel Control Class	: IP 54



Electrically Driven Pump Protection-Control Panel

- All inner circuit connections are low voltage (12/24 V)
- 3 Voltmeters
- 3 Ammeters (max.1000 A)
- Grid phase meter 50/60 Hz
- Phase sequence
- Wattmeter (Active power)
- Varmeter (Reactive power)
- V/A meter (Current power)
- Cos Phi Meter (Power factor)
- Total operating time
- Partial operating time
- Automatic - Manual switch, manual start and stop in manual mode



Diesel Driven Pump Protection-Control Panel

- All inner circuit connections are low voltage (12/24 V)
- 2 Batteries
- 2 Voltmeters
- 2 Battery ammeters
- Tachometer
- Temperature gauge
- Oil temperature gauge
- Oil pressure gauge
- Fuel level gauge
- 2 Battery charging rectifiers
- Battery efficiency control
- Operation error report
- Manual operation buttons
- Warning lamp test button
- Test commissioning
- Monitoring individual charging of batteries
- 3+3 = 6-cycle automatic start-up attempt from batteries
- Automatic - Manual switch, manual start and stop in manual mode

NFPA 20 Fire Pump Versions

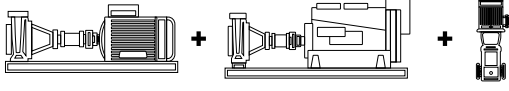
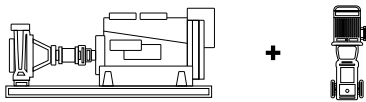
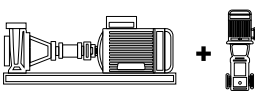

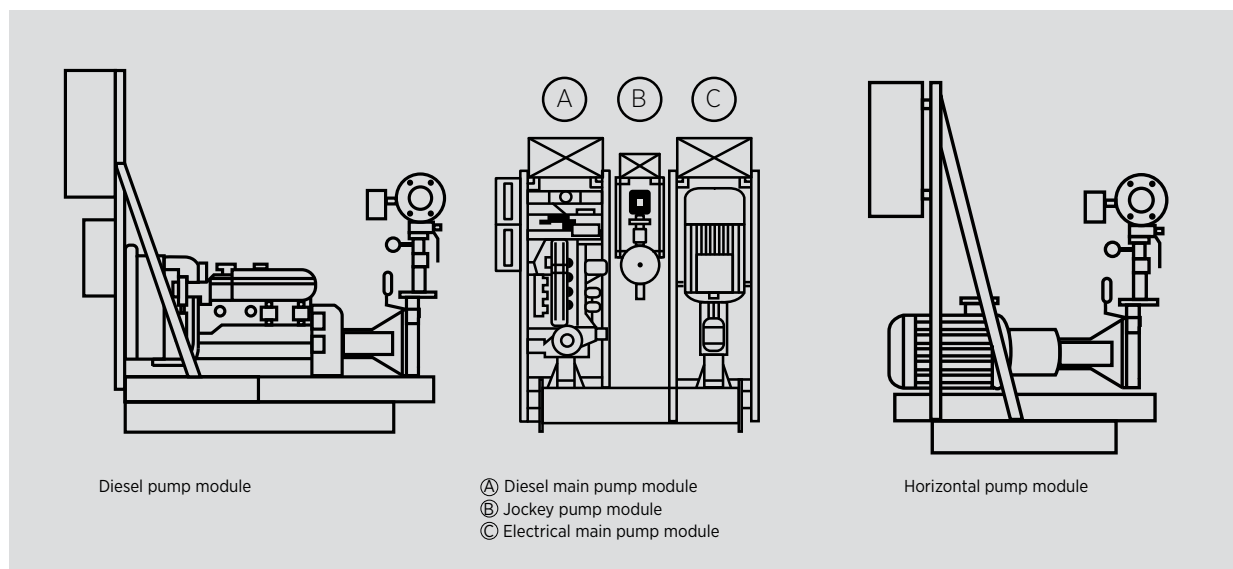
Description	
Pump set with diesel engine, electric motor and jockey pump	
Pump set with diesel engine and jockey pump	
Pump set with electric motor pump and jockey pump	
Pump set with two electric pumps and jockey pumps	

Table 1 : NFPA 20 Fire Pump Versions



Picture 1: Modular System



Dudullu Organize Sanayi Bölgesi 2. Cadde No: 14
34775 Ümraniye İstanbul / Turkey
Tel : +90 216 561 47 74 (Pbx) • Fax : +90 216 561 47 50
www.etna.com.tr/en • info@etna.com.tr



ETNA®

0850 455 38 62
customer service