



Fire Pumps In Accordance With EN 12845 + A1 Standard

✓ ETN YE Series





Fixed Firefighting Systems - Automatic Sprinkler Systems - Design, Installation and Maintenance

This European Standard was approved by CEN on 2019.

CEN members are bound to comply with the CEN/CENELEC Internal Regulations which stipulate the conditions for giving this European Standard the status of a national standard without any alteration. Up-to-date lists and bibliographical references concerning such national standards may be obtained on application to the CEN-CENELEC Management Centre or to any CEN member.

This European Standard exists in three official versions (English, French, German). A version in any other language made by translation under the responsibility of a CEN member into its own language and notified to the CEN-CENELEC Management Centre has the same status as the official versions.

CEN members are the national standards bodies of Austria, Belgium, Bulgaria, Croatia, Czech Republic, Denmark, Estonia, Finland, Former Yugoslav Republic of Macedonia, France, Germany, Greece, Hungary, Iceland, Ireland, Italy, Latvia, Lithuania, Luxembourg, Malta, Netherlands, Norway, Poland, Portugal, Romania, Slovakia, Slovenia, Spain, Sweden, Switzerland, Turkey and United Kingdom.

What is the most important standard for fire?

The answer is already in the question, it is the EN 12845+A1 Firefighting Standard. And ETNA is the first Turkish brand to produce fire pump systems in accordance with EN 12845+A1.

About EN 12845+A1 Standard in Turkey

TS EN 12845A+A1 (2019) standard is exactly the same as the EN 12845+A1 (2019) standard, and it is the first **“Turkish Fire Standard”** to be established by the Turkish Standards Institute (TSE) with the permission of the European Committee for Standardization (CEN). This standard was established based on the EN 12845+A1 (2019) standard that is accepted by CEN, prepared by the TSE Engineering Services Expertise Group, and accepted and issued as a “Turkish Standard” at the TSE Technical Council meeting on February 3, 2020.

ETNA Fire Pump Systems



ETNA Fire Pump Systems

The fire pump systems in accordance with TS EN 12845 + A1 are designed and manufactured in accordance with the requirements of the TS EN 12845 + A1 (Design, Installation and Maintenance of Fixed Fire Extinguishing Systems and Automatic Sprinkler Systems) standard that is in force.

- Each set uses ETNA EA Series end-suction (norm) pumps.

Exact Answer to Your Need

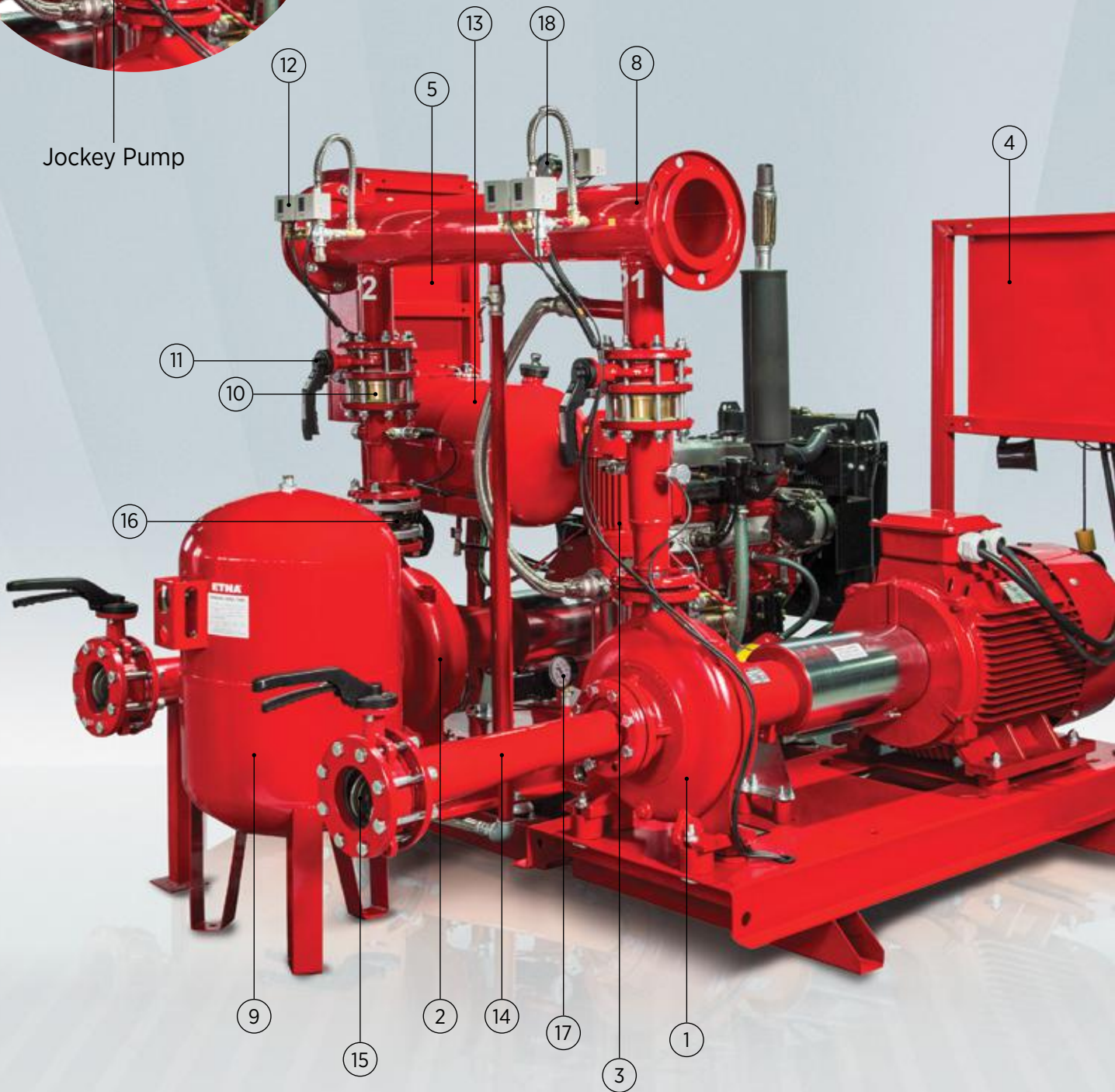
Our expert engineer team helps you determine the right pump system for your project. Our products are delivered as full sets including electric- or diesel-driven pumps, jockey pumps, electric or diesel control board, individual modular chassis for each pump or connectors on a common chassis, and all accessories.

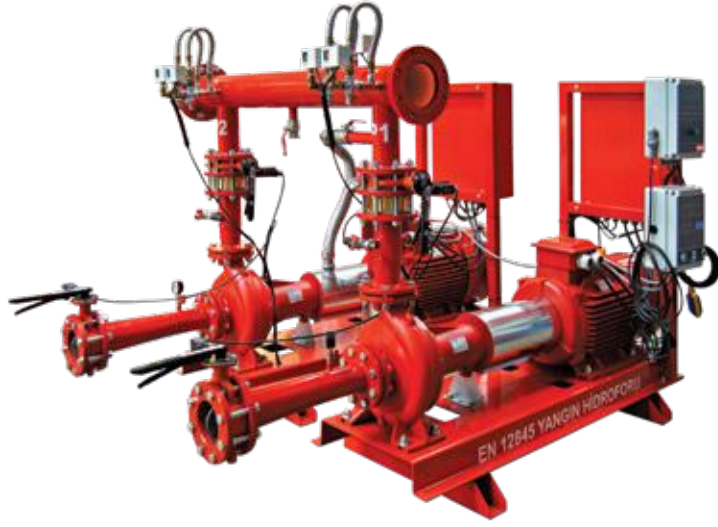
ETNA Pump Details (in accordance with the EN 12845 Standard)



Jockey Pump

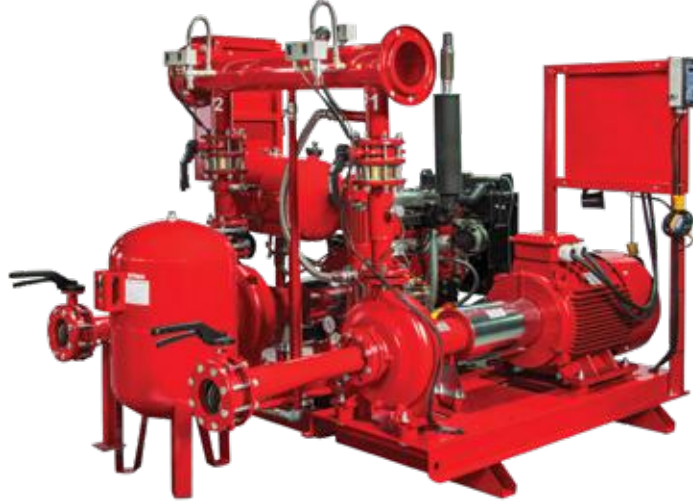
- | | |
|--|----------------------------------|
| 1. Electric Motor Driven End Suction Fire Pump | 10. Check Valve |
| 2. Diesel Engine End Suction Fire Pump | 11. Discharge Butterfly Valve |
| 3. Jockey Pump | 12. Pressure Switch |
| 4. Electric Pump Controller | 13. Fuel Tank |
| 5. Diesel Pump Controller | 14. Eccentric Suction Kit |
| 6. Jockey Pump Controller | 15. Suction Line Butterfly Valve |
| 7. Alarm and Supervisory Panel (Optionally) | 16. Compensator |
| 8. Discharge Manifold | 17. Suction Pressure Gauge |
| 9. Expansion Tank | 18. Discharge Pressure Gauge |





Electric-Driven Fire Pump

Pompa Özellikleri	
Number of Main Pumps	1 to 3
Number of Jockey Pumps	1
Maximum Capacity - Flow Rate	3 x 450 m ³ /h
Maximum Pressure	230 mSS
External Control Voltage	24V
Panel Control Class	IP 54



Electric- / Diesel-Driven Fire Pump

Pompa Özellikleri	
Number of Main Electrical Pumps	1
Number of Main Diesel Engine	1
Number of Jockey Pumps	1
Maximum Capacity - Flow Rate	2 x 450 m ³ /h
Maximum Pressure	230 mSS
External Control Voltage	12 - 24V
Panel Control Class	IP 54



**Electric-Driven Pump
Protection-Control Board**

- Except for the motor all outlet connections are low voltage (12/24 Vdc)
- 3 Voltmeters
- 3 Ammeters (max.1000 A)
- Mains power phase meter 50/60 Hz
- Phase sequence
- Wattmeter (Active power)
- Varmeter (Reactive power)
- Voltammeter (Current power)
- Cosine meter (Power factor)
- Total operating time
- Partial operating time
- Automatic - Manual switch, manual start and stop in manual mode



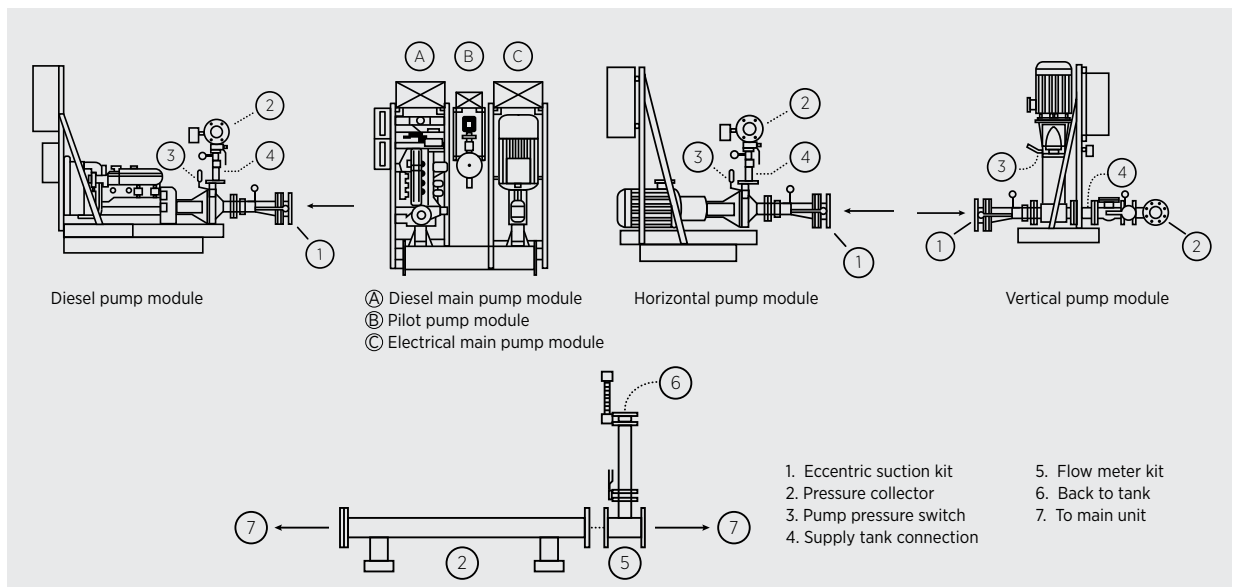
**Diesel-Driven Pump
Protection-Control Board**

- Except for the motor all outlet connections are low voltage (12/24 Vdc)
- 2 Batteries
- 2 Voltmeters
- 2 Battery ammeters
- Tachometer
- Temperature gauge
- Oil temperature gauge
- Oil pressure gauge
- Fuel level gauge
- 2 Battery charging rectifiers
- Battery efficiency control
- Operation error report
- Manual operation buttons
- Warning lamp test button
- Test commissioning
- Monitoring individual charging of batteries
- 6 automatic start-up attempts for batteries (3+3)
- Automatic - Manual switch, manual start and stop in manual mode

EN 12845 Booster Versions

<p>Description</p> <p>Booster set with two main electrical motor pumps and jockey pump</p>	
<p>Description</p> <p>Booster set with electrical motor, diesel engine and jockey pump</p>	
<p>Description</p> <p>Booster set with two electrical motor, diesel engine and jockey pump</p>	
<p>Description</p> <p>Booster set with three electrical motor and jockey pump</p>	
<p>Description</p> <p>Booster set with three vertical shaft pump and jockey pump</p>	

Modular System





Dudullu Organize Sanayi Bölgesi 2. Cadde No: 14
34775 Ümraniye İstanbul / Turkey
Tel : +90 216 561 47 74 (Pbx) • Fax : +90 216 561 47 50
www.etna.com.tr/en • info@etna.com.tr



ETNA®

0850 455 38 62
customer service