



**Completely Stainless Steel Vertical
Multistage Pumps
KI Series**

Completely Stainless Steel, Vertical Multi-Stage Centrifugal Pumps



KI Series

High quality pumps with compact construction and high efficiency with AISI304 grade stainless steel on all water contact surfaces. Features in-line (on the same axis) inlet-outlet connections.

Fields of Use

- Pressurized water supply in residential and commercial buildings
- Garden irrigation systems
- Agricultural irrigation systems
- Industrial applications
- Water treatment systems
- Clean water transfer

Pump Specifications

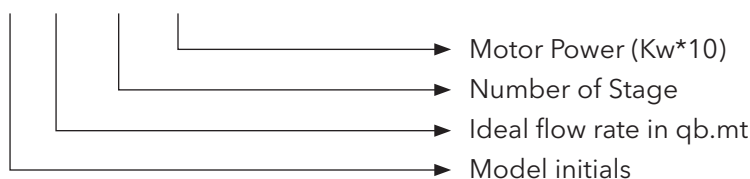
- Pump Body : AISI 304 Stainless Steel
- Impeller & Diffuser : AISI 304 Stainless Steel
- Pump Shaft : AISI304 & AISI316 Stainless Steel
- Mechanical Seal : Sic/Carbon+Sic/Carbon+Fluorine Rubber+304

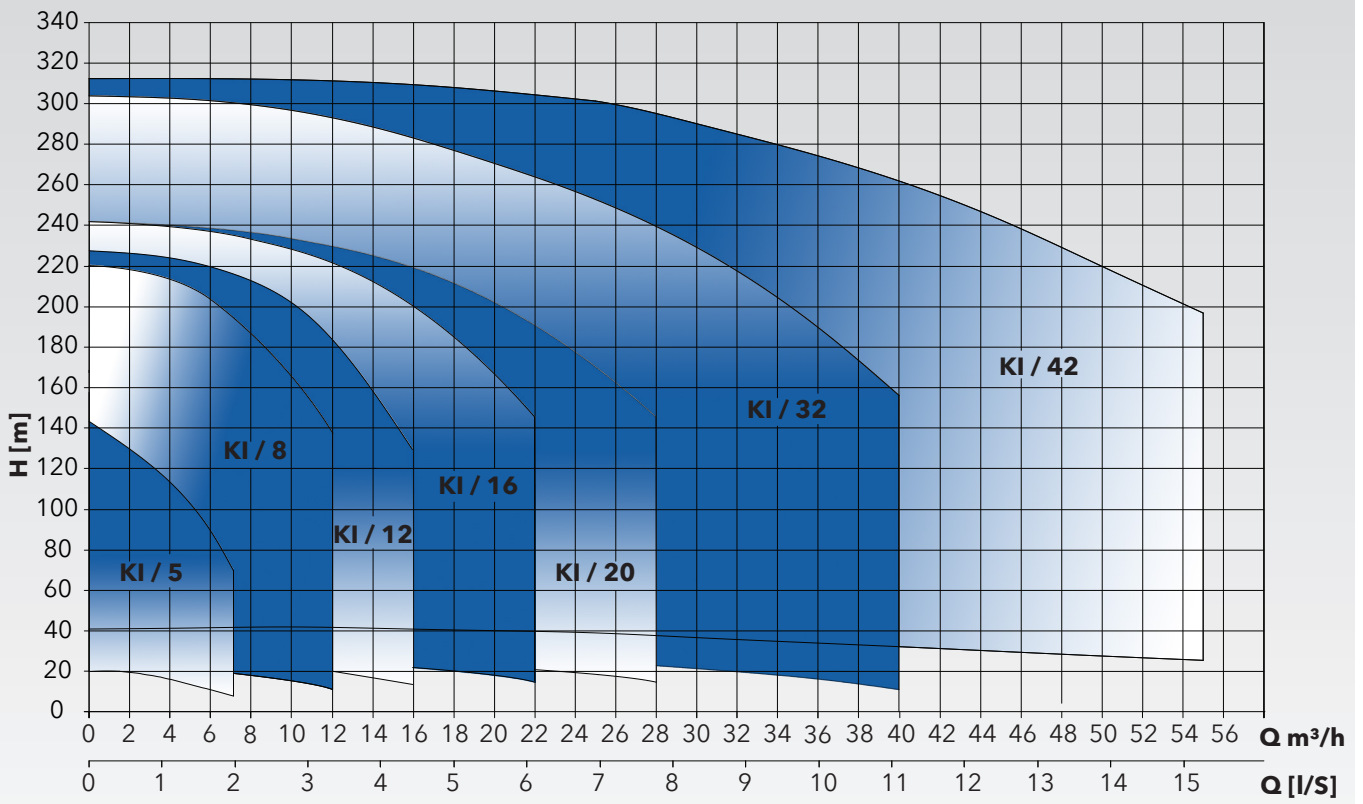
Technical Specifications

- Maximum Flow : 55 m³/h
- Maximum Pressure : 312 mwc
- Inlet-Outlet Diameter : DN25 & DN50
- Pressure Class : PN25 & PN32
- Max. Ambient Temperature : 40°C
- Fluid Temperature : 0 - 100°C
- Fluid Property : Clean, solid particle-free, chemically neutral water
- Motor Speed : 2900 rpm
- Network Connection : 3*380V - 50 Hz
- Motor Power : 0,75 - 45 Kw
- Protection Class : IP55
- Insulation Class : F

Identification Code

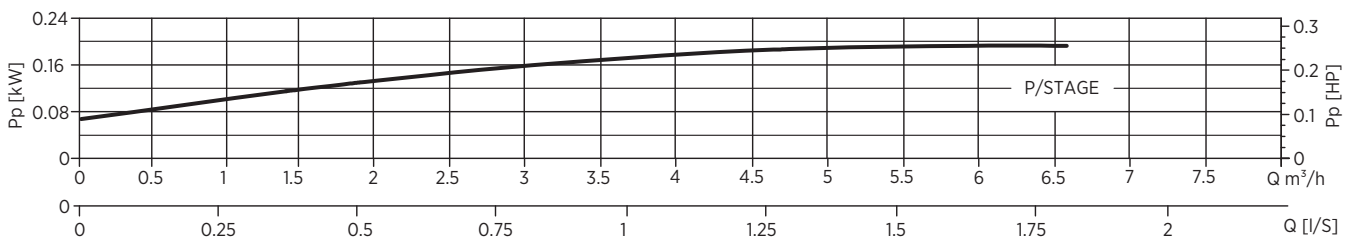
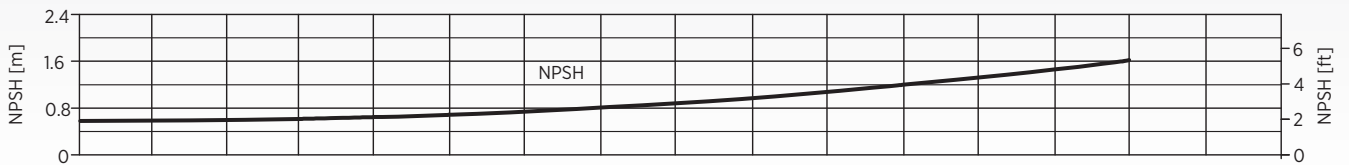
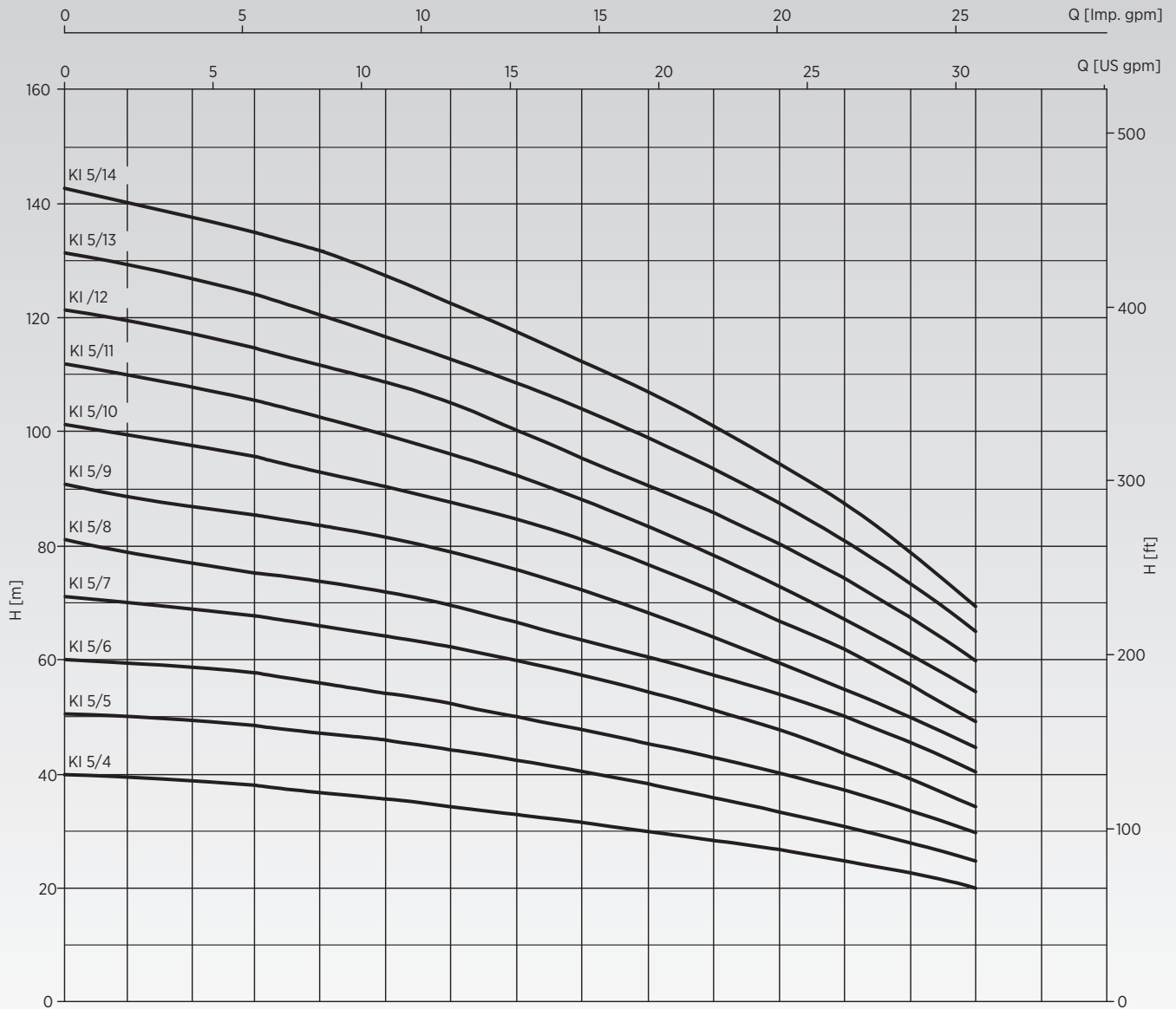
KI 5 / 11 / 22





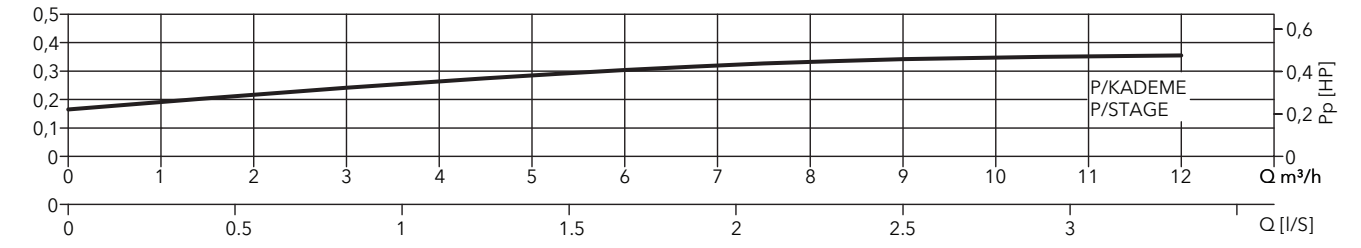
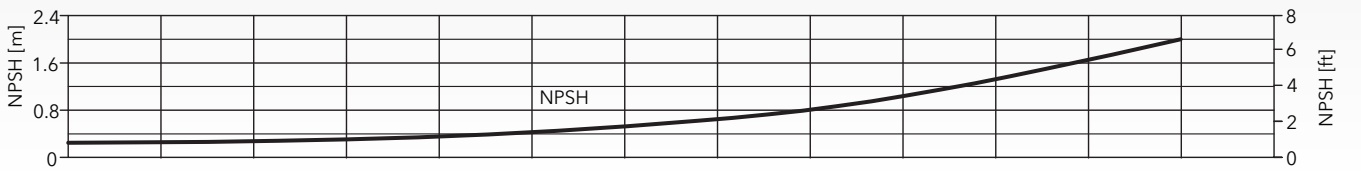
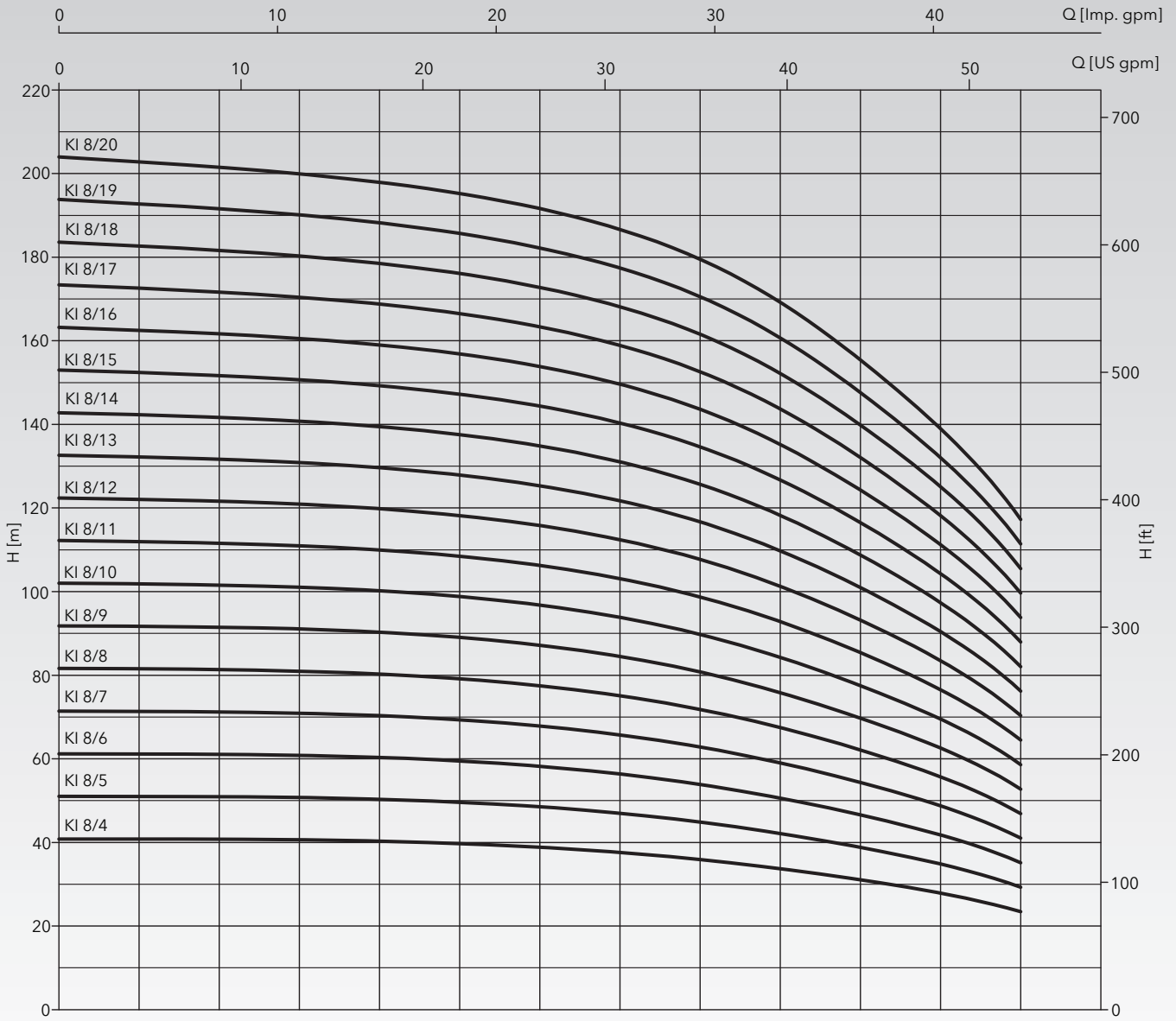
KI Series Performance Curves

KI 5 Series



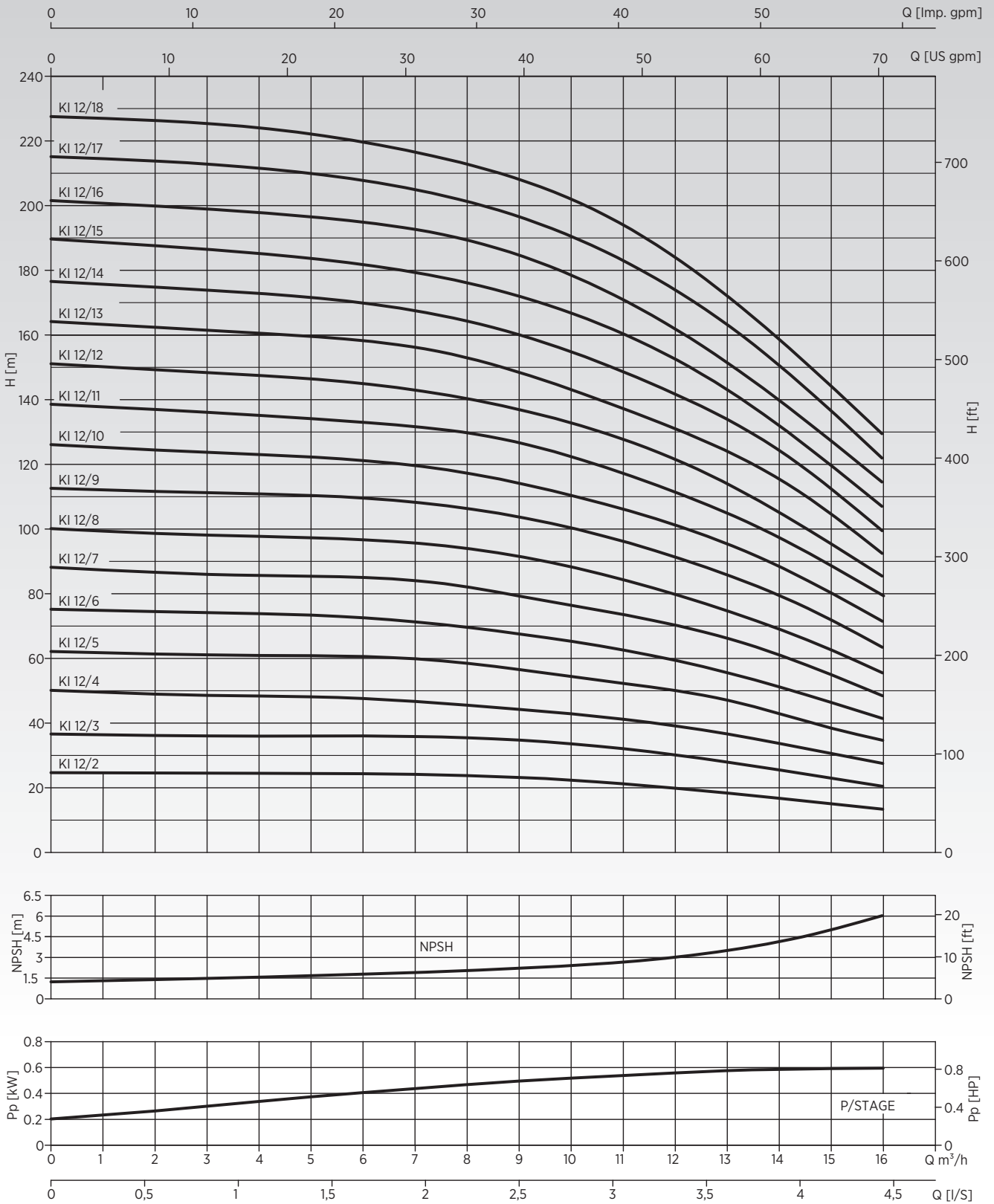


KI 8 Series

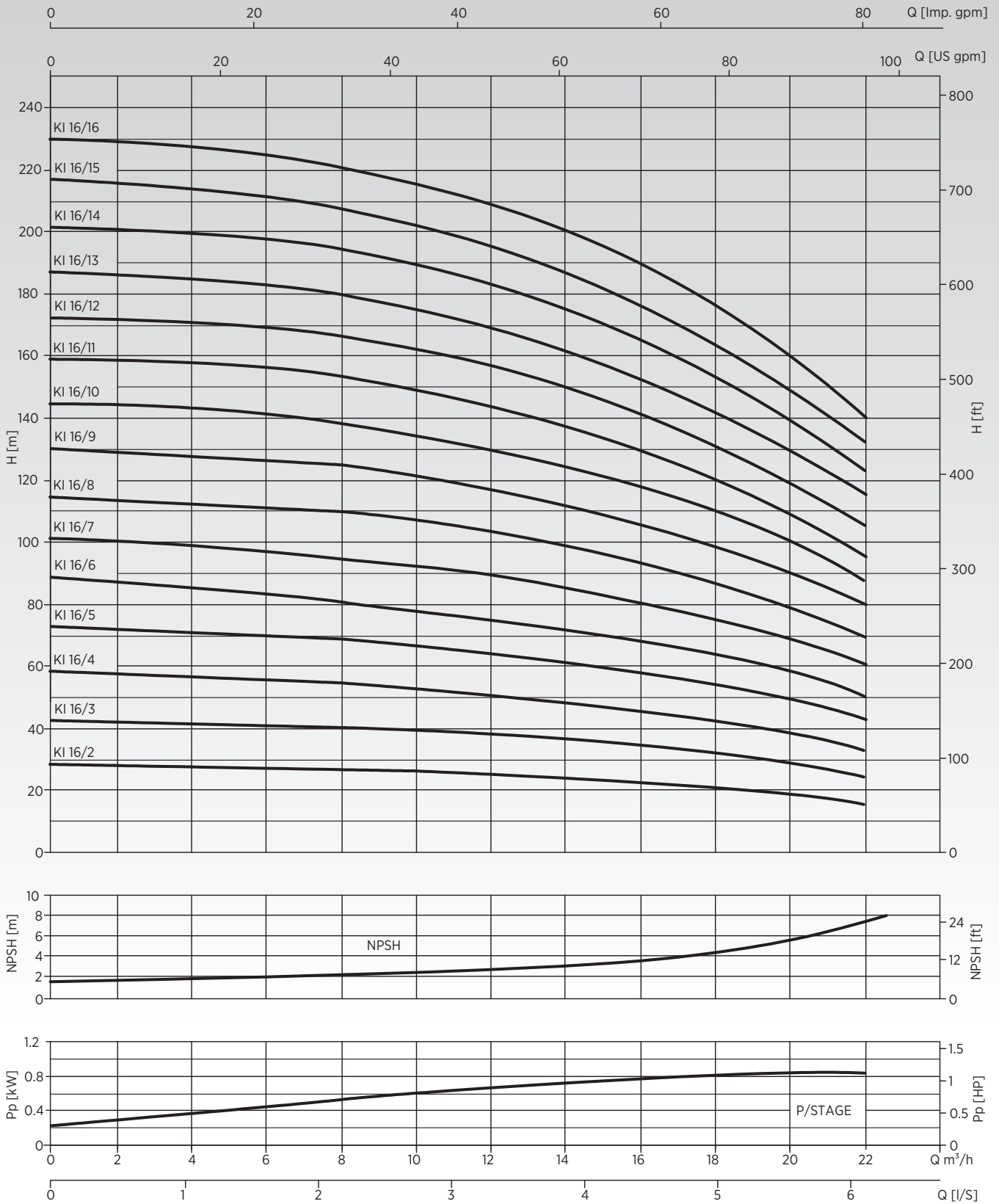


KI Series Performance Curves

KI 12 Series

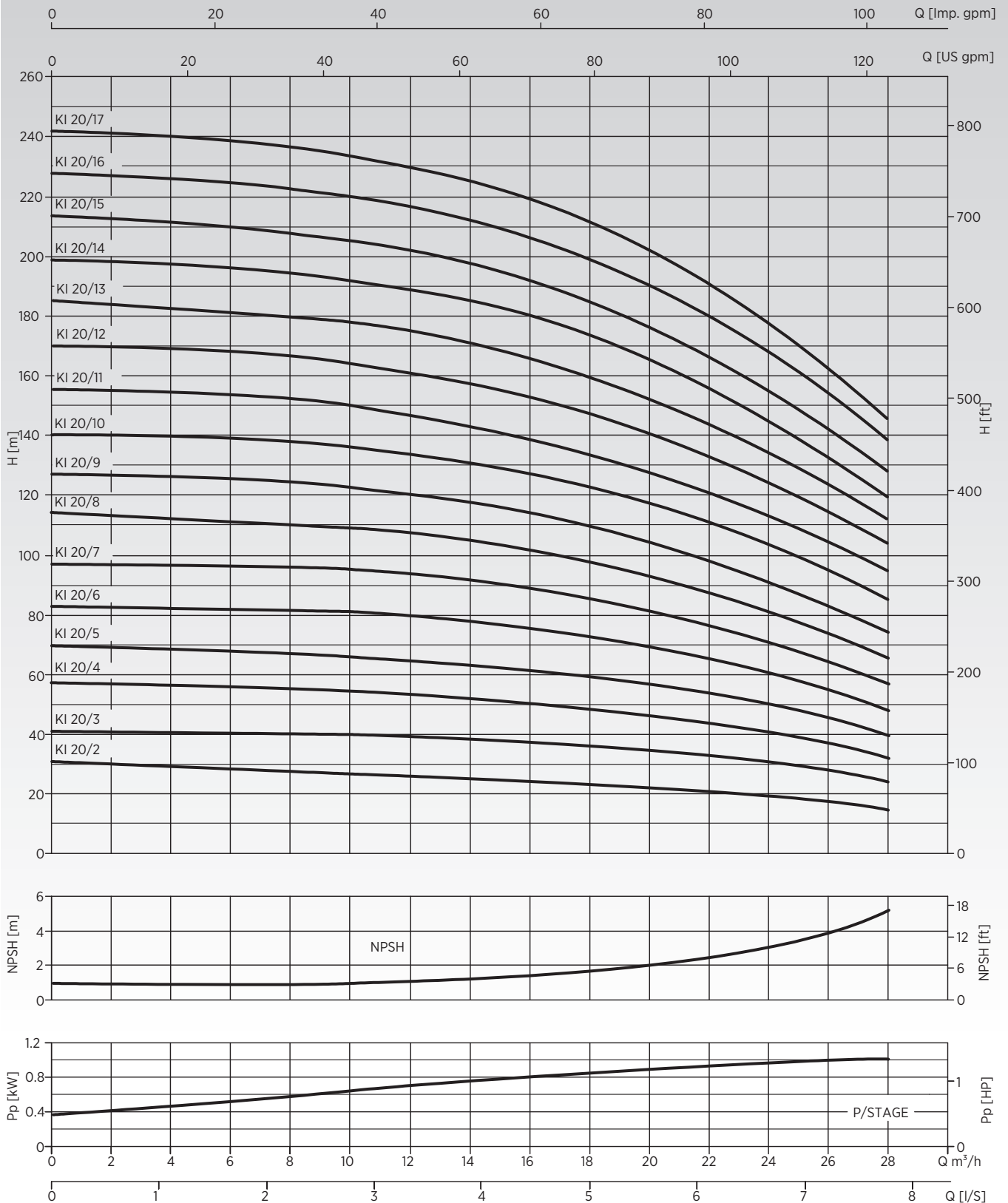


KI 16 Series

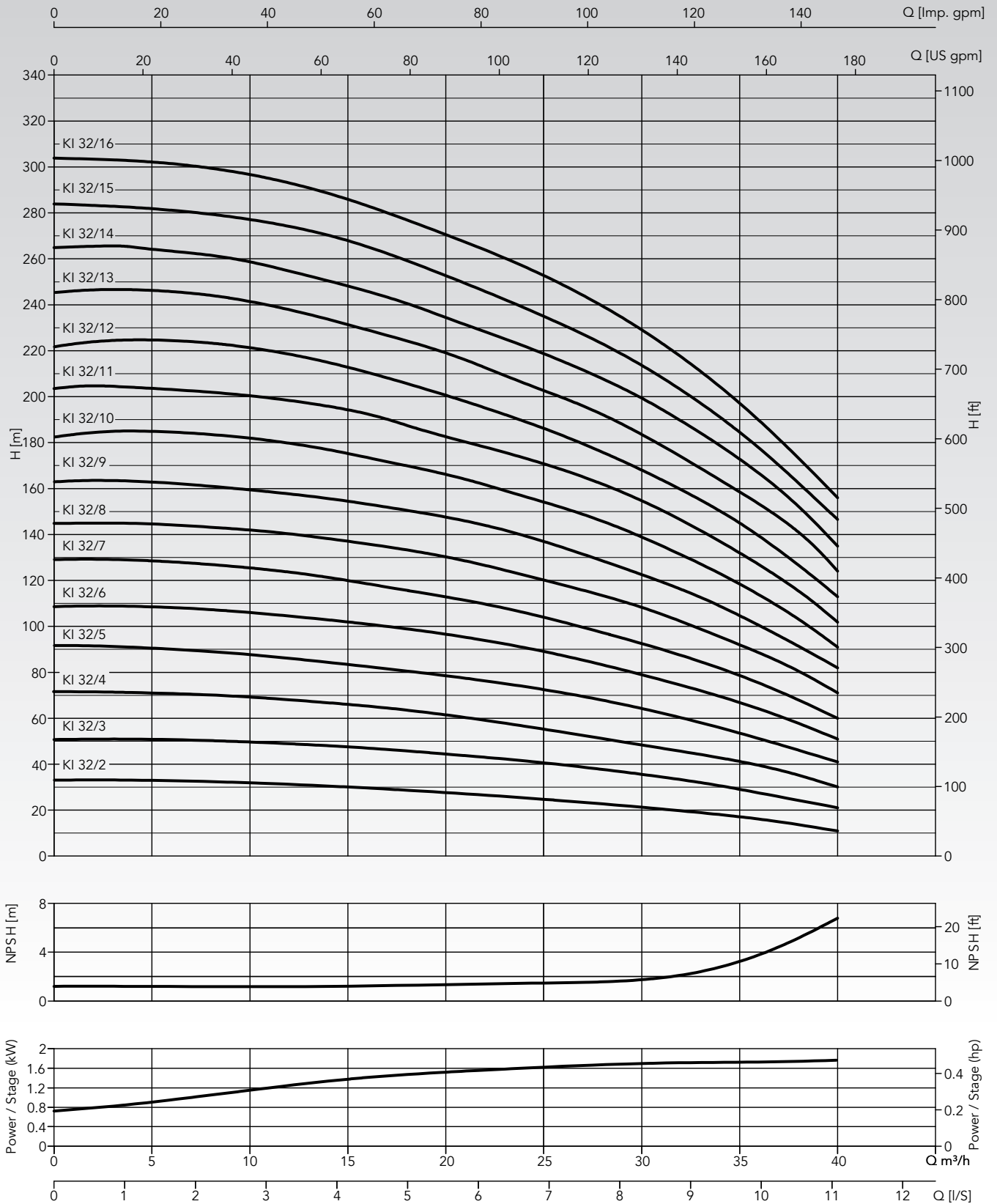


KI Series Performance Curves

KI 20 Series

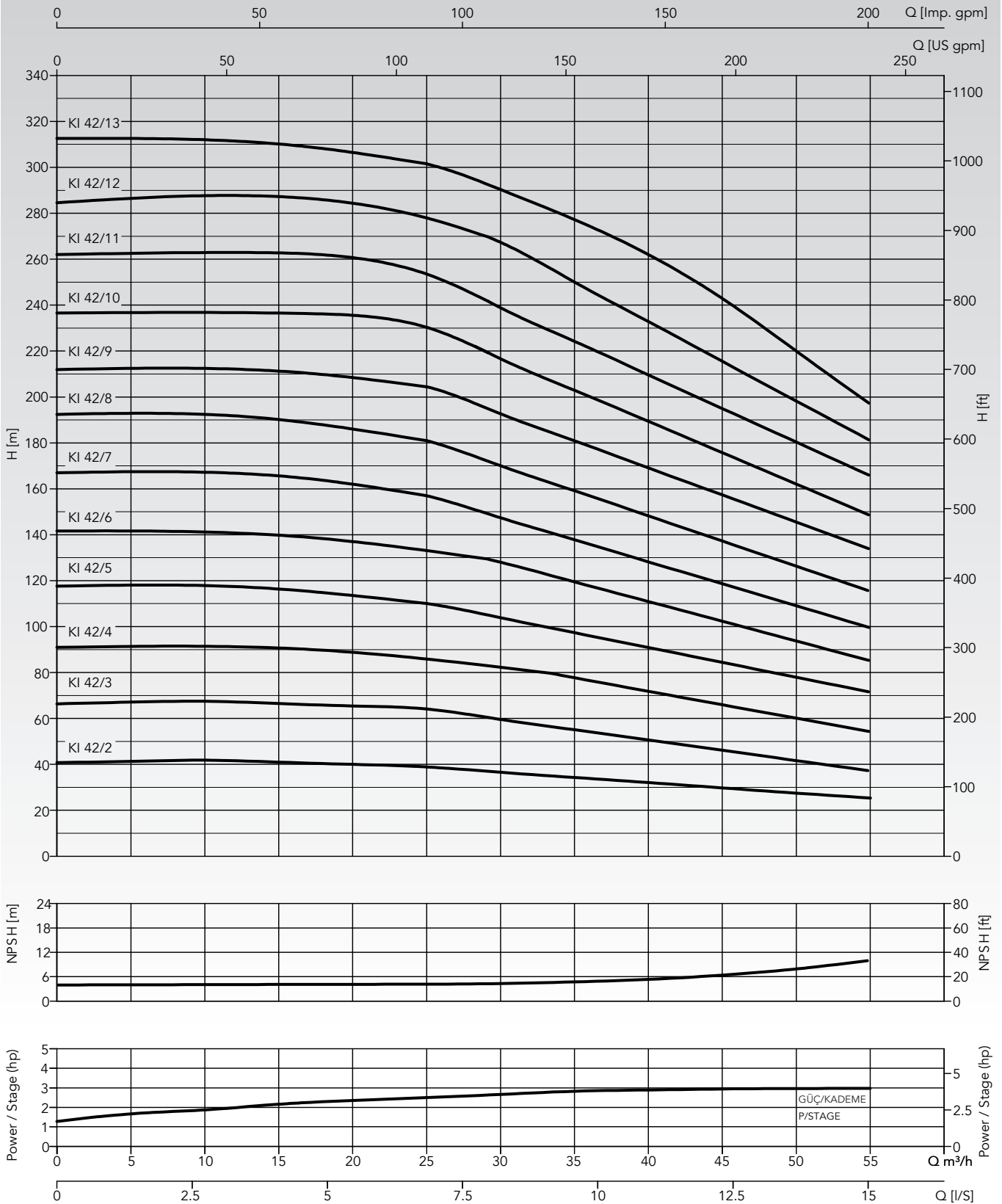


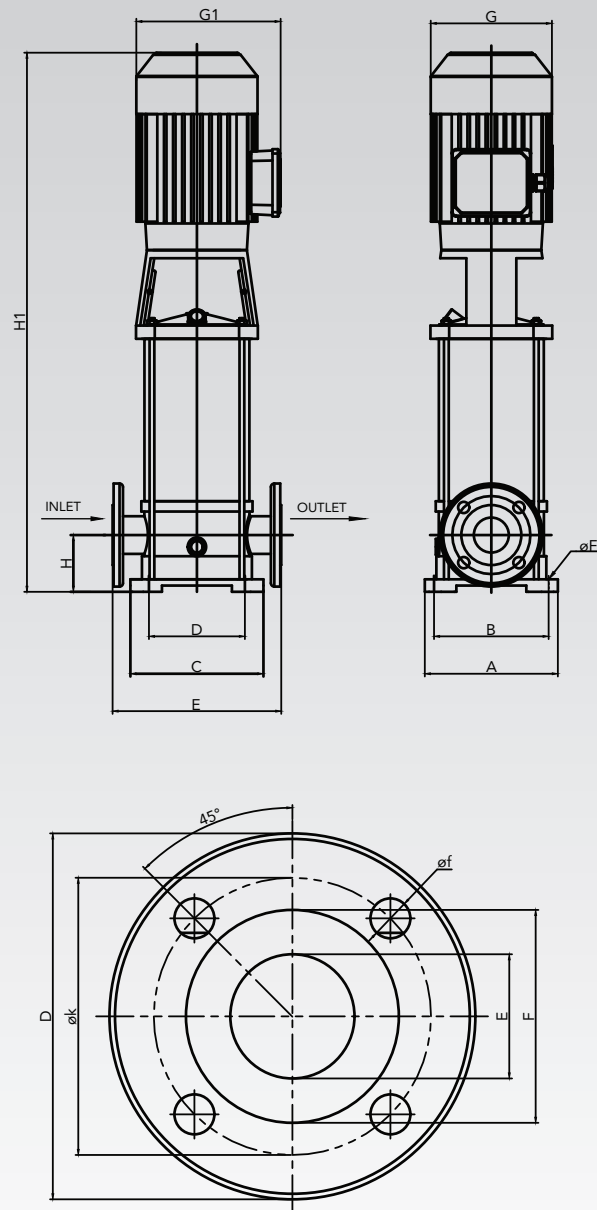
KI 32 Series



KI Series Performance Curves

KI 42 Series





TYPE	DIMENSIONS					
	D	øk	E	F	øf	Hole Pieces
KI 5	115	85	27	50	14	4
KI 8	150	110	40	84	18	4
KI 12	165	125	50	99	18	4
KI 16	165	125	50	99	18	4
KI 20	165	125	50	99	18	4
KI 32	185	145	65	118	18	8
KI 42	200	160	80	138	18	8

KI Series Dimensions

TYPE	DIMENSIONS												
	Inlet	Outlet	A	B	C	D	E	ØF	H	H1	G	G1	Weight
KI 5/4-075	DN25	DN25	190	160	147	90	248	10	85	578	156	196	19
KI 5/5-11										605			21
KI 5/6-11										632			22
KI 5/7-15										714	176	216	23
KI 5/8-15										741			24
KI 5/9-22										768			29
KI 5/10-22										795			29
KI 5/11-22										822			30
KI 5/12-22										849			31
KI 5/13-30										918			35
KI 5/14-30										942			194

TYPE	DIMENSIONS												
	Inlet	Outlet	A	B	C	D	E	ØF	H	H1	G	G1	Weight
KI 8/4-15	DN40	DN40	220	184	190	110	285	13	115	710	176	216	30
KI 8/5-22										740			35
KI 8/6-22										770			36
KI 8/7-30										800			41
KI 8/8-30										872	194	231	42
KI 8/9-40										902			51
KI 8/10-40										932			52
KI 8/11-40										962			53
KI 8/12-55										992	300	318	62
KI 8/13-55										1140			63
KI 8/14-55										1170			64
KI 8/15-55										1200			67
KI 8/16-75										1230			83
KI 8/17-75										1260			84
KI 8/18-75										1290			85
KI 8/19-75										1320			87
KI 8/20-75										1350	88		

TYPE	DIMENSIONS														
	Inlet	Outlet	A	B	C	D	E	ØF	H	H1	G	G1	Weight		
KI 12/2-15	DN50	DN50	220	184	190	110	285	13	120	650	176	216	27		
KI 12/3-22										680			33		
KI 12/4-30										752			38		
KI 12/5-30										782	194	231	39		
KI 12/6-40										812			47		
KI 12/7-55										960			300	318	57
KI 12/8-55										990					58
KI 12/9-55										1020	59				
KI 12/10-75										1020	75				
KI 12/11-75										1050	76				
KI 12/12-75										1103	77				
KI 12/13-110										1126	92				
KI 12/14-110										1170	93				
KI 12/15-110										1200	96				
KI 12/16-110										1230	97				
KI 12/17-110										1260	98				
KI 12/18-110										1290	99				

TYPE	DIMENSIONS														
	Inlet	Outlet	A	B	C	D	E	ØF	H	H1	G	G1	Weight		
KI 16/2-22	DN50	DN50	220	184	190	110	285	13	120	664	175	215	33		
KI 16/3-30										751			38		
KI 16/4-40										795			195	230	46
KI 16/5-55										959			300	320	56
KI 16/6-55										1004	58				
KI 16/7-75										1049	74				
KI 16/8-75										1094	76				
KI 16/9-75										1116	78				
KI 16/10-110										1184	93				
KI 16/11-110										1229	95				
KI 16/12-110										1274	97				
KI 16/13-150										1319	300	400	135		
KI 16/14-150										1364			137		
KI 16/15-150										1409			138		
KI 16/16-150										1454			140		

TYPE	DIMENSIONS																	
	Inlet	Outlet	A	B	C	D	E	ØF	H	H1	G	G1	Weight					
KI 20/2-22	DN50	DN50	220	184	190	110	285	13	120	664	176	216	33					
KI 20/3-40										751	194	231	45					
KI 20/4-55										914								
KI 20/5-55										959	310	318	56					
KI 20/6-75										1004				73				
KI 20/7-75										1049					75			
KI 20/8-110										1094						90		
KI 20/9-110										1139							92	
KI 20/10-110										1184								93
KI 20/11-110										1229								
KI 20/12-150										1380	133							
KI 20/13-150										1425		135						
KI 20/14-150										1470			137					
KI 20/15-150										1515				139				
KI 20/16-185										1560					152			
KI 20/17-185										1605						153		

TYPE	DIMENSIONS																	
	Inlet	Outlet	A	B	C	D	E	ØF	H	H1	G	G1	Weight					
KI 32/2-30	DN65	DN65	298	240	226	170	320	14	105	920	176	216	33					
KI 32/3-55										990	220	255	58					
KI 32/4-75										1060								
KI 32/5-110										1390	310	400	93					
KI 32/6-110										1460				95				
KI 32/7-150										1530					132			
KI 32/8-150										1600						134		
KI 32/9-185										1670							163	
KI 32/10-185										1740								165
KI 32/11-220										1810								
KI 32/12-220										1880	205							
KI 32/13-300										2095		283						
KI 32/14-300										2165			285					
KI 32/15-300										2235				287				
KI 32/16-300										2305					289			

TYPE	DIMENSIONS															
	Inlet	Outlet	A	B	C	D	E	ØF	H	H1	G	G1	Weight			
KI 42/2-55	DN80	DN80	334	265	249	190	365	14	140	970	220	255	33			
KI 42/3-110										1310				310	400	93
KI 42/4-150										1390						
KI 42/5-185										1470	163					
KI 42/6-220										1550		203				
KI 42/7-300										1700			283			
KI 42/8-300										1860	285					
KI 42/9-300										1940		287				
KI 42/10-370										2020			353			
KI 42/11-450										2120	433					
KI 42/12-450										2200		435				
KI 42/13-450										2280			437			



Dudullu Organize Sanayi Bölgesi 2. Cadde No: 14
34775 Ümraniye İstanbul / Turkey
Tel : +90 216 561 47 74 (Pbx) • Fax : +90 216 561 47 50
www.etna.com.tr/en • info@etna.com.tr



ETNA®